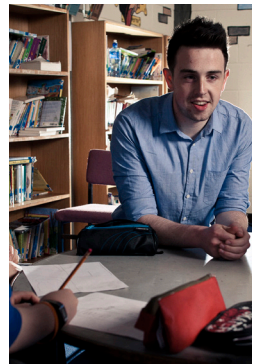
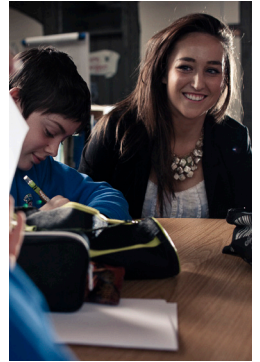


# The DCU Incorporation Programme



[www.dcuincorporation.ie](http://www.dcuincorporation.ie)



## A new vision of education for all the children of Ireland

Incorporation of  
St Patrick's College Drumcondra,  
Mater Dei Institute of Education &  
Church of Ireland College of Education  
into Dublin City University



The planned new Institute of Education at DCU

## A. The Institute of Education

### 1. Overarching strategy

The planned coming together of St Patrick's College, Drumcondra (SPD), Mater Dei Institute of Education (MDI) and Church of Ireland College of Education (CICE) with Dublin City University (DCU) will herald a new era for education in Ireland. This development will create the largest critical mass of education expertise on this island, and will provide both Initial Teacher Education (ITE) and Continuous Professional Development (CPD) for teachers and educators across the full education continuum, from Early Childhood through Primary and Secondary to Third and Fourth Level.

The Incorporation will create an internationally-significant Institute of Education, which will also conduct pioneering research in priority areas for 21st Century education, including, for example, STEM (Science, Technology, Engineering and Mathematics) education, special-needs and inclusive education, literacy and numeracy, arts education, further education, assessment, digital learning, as well as ethical and values-based education. The Institute will become the fifth faculty of DCU. It will engage with schools and educational communities across Ireland and beyond, and it will be an authoritative source of influence on policy development.

DCU is, and will continue to be, a non-denominational, secular university with a strong commitment to pluralism, social inclusion and diversity at its core. The new Institute of Education will provide a place of mutual respect for the formation of teachers for denominational (Roman Catholic; Church of Ireland/Reformed Christian traditions), non-denominational and multi-denominational schools. In this way, the establishment of the Institute will enable the education of excellent teachers for all dimensions of a 21st century pluralist society.

## **2. Structure of the Institute of Education**

While the ethos and identity of each of the three incorporating institutions will be respected and safeguarded within the 'new DCU', these three institutions will cease to exist as autonomous, separate legal entities post incorporation. Similarly, while remaining a secular university, the profile of DCU will be changed significantly as a result of the incorporation process.

The following principles will underpin the governance and operational structure of the new Institute of Education:

- the Institute shall constitute a fifth faculty of DCU (the existing four being DCU Business School, the Faculty of Science & Health, the Faculty of Engineering & Computing, and the Faculty of Humanities & Social Sciences).
- consistent with DCU's governance structure, the Institute of Education will be led by an Executive Dean who will be an ex-officio member of DCU's Executive Committee
- in order to ensure that the distinctive identity and values of teacher education in both the Roman Catholic and Church of Ireland/Reformed Christian traditions are maintained on an ongoing basis, two Centres for Denominational Education shall be established within the Institute (a Centre for Catholic Education and a Church of Ireland Centre).<sup>1</sup>



## B. Centres for Denominational Education within the Institute of Education

### 1. Vision

Within the Institute of Education, institutional identities will be drawn together to facilitate and enhance the capacity of each to collaborate effectively in the delivery of teacher education of the highest quality. The multi-disciplinary opportunities of the university will be available to all, while the richness and diversity of individual traditions will be sustained. This new collaborative framework will provide an enriched understanding and experience for students and staff alike. It will see the formation of the teachers of tomorrow in a pluralist, respectful, developmental academic environment.

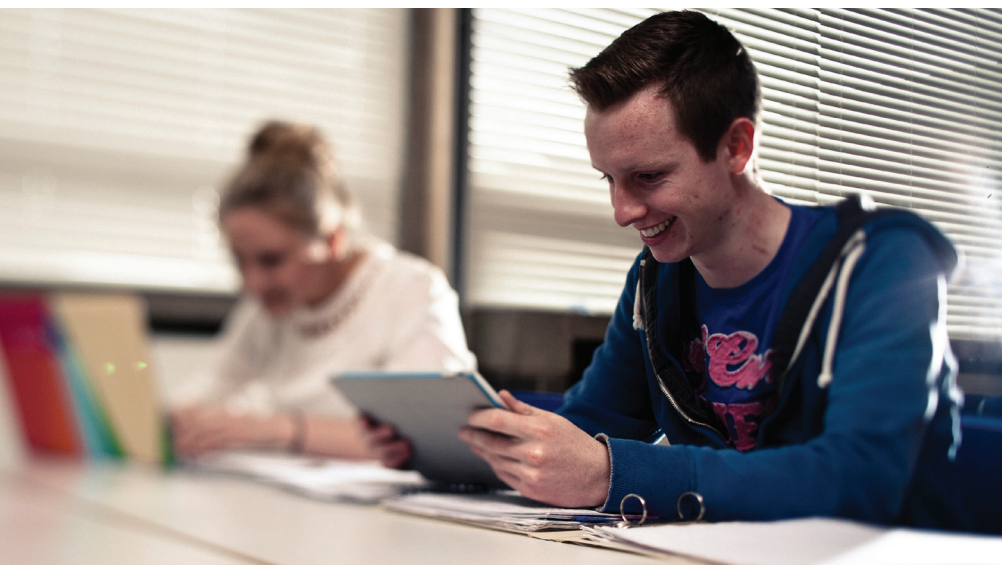
This, in turn, will profoundly support the development of children in schools across the country.

While maintaining its secular context, the university will facilitate and support the co-existence of different faith-based traditions, working collaboratively, generously and respectfully. Towards this end, two Denominational Centres will be established within the new Institute of Education at DCU in order to ensure that the distinctive identity, values and learning of Roman Catholic and Church of Ireland/Reformed Christian traditions are maintained and promoted in teacher education.

In other parts of Europe for many centuries, universities have enabled different traditions within Christianity to teach and learn collaboratively side-by-side. For the first time in an Irish context, DCU will provide such a framework to bring together institutions representing the Roman Catholic tradition and the Reformed Christian traditions. This provides an opportunity for all involved to celebrate the different strands in Irish society (history, traditions, identities, beliefs and values) in a critically-reflective, academic space. These strands will meet as distinct equals. Such a development responds to the emerging needs of a pluralist Ireland. But, significantly, it further contributes to the establishment of peace across the island, built upon the values of mutual respect and inclusiveness.

Each of the incorporating institutions will bring a recognised heritage and a distinctive engagement in teacher education to the university. The synergies from this are immense, as are the opportunities for enhanced education and a wider contribution to Irish society. Far from their being lost in the incorporation, it is our shared vision that the heritage of each institution will be deepened and strengthened through the shared space and the unique wealth of talents and experience within the university.

The core curriculum for teacher preparation will be denominationally neutral and common to all but will, as required, allow for the delivery of modules to prepare teachers appropriately for employment in denominational schools.



The established relationships with schools, including denominational schools, will be maintained and enhanced in the new Institute of Education. The Denominational Centres within the Institute of Education will have specific responsibility for delivering their respective denominational modules as well as engaging closely with their respective schools.

Particular features pertaining to these Centres, within the framework of a secular university, follow.

## **2. Governance Framework**

There will be representation of each of the three incorporating Institutions on the Governing Authority of DCU. At faculty management level, the respective directors of the two Centres will be members of the Institute of Education Management Committee, chaired by the Executive Dean. Each Centre will therefore be fully part of the structure, staffing and governance of the university and each director therefore accountable within the management system of the university.

Recognising the importance of respecting and supporting the distinctive ethos and traditions of the broad religious traditions involved, it is proposed that each Centre be appropriately supported by an Advisory Council, appointed by the relevant Archbishop/Church authorities.

The purpose of such an Advisory Council will be to provide guidance on upholding the distinctive ethos, values and traditions of each particular denomination within the Centre and the schools which it serves:

- through advice to the director of the Centre on curricular content relating to specialist areas of programmes within the Centre's remit,
- commentary on related denominational issues/outcomes, and
- advice to the director on follow-up actions as appropriate.

The director of each Centre will therefore be in dialogue with their respective Advisory Council on matters relating to denominational interests and educational needs. There will be direct input by the relevant church authorities to the appointment of the director of each Centre, while a nominee of the relevant Advisory Council will participate in the selection process of other staff of their respective Centres.

### 3. Functions

A number of defined functions would be reserved to each Centre to preserve and promote its distinctive values, beliefs and traditions. It is anticipated that these would focus on areas such as:

- Maintaining and promoting their distinctive engagement with the relevant denominational schools and faith communities of which they form part;
- Specialist areas of Initial Teacher Education which require distinctive denominational features/focus;
- Teaching of Religions, Ethics, Morals and Values specific to denominational preparation;
- Certain denominational qualifications/certification programmes;
- Denominational school placements and assessments, as well as related studies, and specialist research, tutorials and supervision to support school placements and links;
- Quality assurance in relation to Inclusive Education and Small Schools;

Notwithstanding the foregoing, the greater part of the subject material to be taught on initial teacher education programmes shall be provided in common to all students in the wider setting of the Institute of Education and the Faculty of Humanities and Social Sciences. In this way, the synergies, research, innovation and richness of the university can be best accessed by all participants.

### 4. Staffing

The core staffing of each of these Centres shall be small in number, reflecting the specialized functions involved and the integrated role of the Centres in the broader Institute. Their appointment shall be subject to the arrangements set out above.

More detailed descriptions of the two Denominational Centres are provided in Appendix 1 and Appendix 2 below.



## Appendix 1

# Church of Ireland Centre (CIC)

### 1. Governance

The Director of the Centre will be a member of the Faculty of Education Management Committee, chaired by the Executive Dean. The Director will fulfil a critical leadership role in the management of the Centre and in upholding its Anglican identity and contribution to the life of a secular university.

The Director will be supported by an external advisory body, a Council, whose membership will be nominated by the appropriate Church bodies. Its core role will focus on securing and promoting the Centre's Anglican ethos and outputs within a secular University.

To this end it will advise the Director:

- with regard to the specific needs of the schools that the Centre serves - through initial teacher education (primary and post-primary), continuing professional development, research and school support.
- on curricular content and assessment of specialist areas within the Centre's remit.

The relevant Church bodies through the Council will have a direct input into the appointment of the Director of CIC. A nominee of the Council will participate in the selection process for all staff working in the Centre.



## 2. Functions of the Centre

The Centre will focus its work as follows:

- Selection of B.Ed. students applying through the Reformed Christian entrant strand (CAO reserved places);
- With the support of the Anglican Chaplaincy, custodianship of the Reserved Places B.Ed students throughout their undergraduate degree;
- Provision of compulsory B.Ed. modules in Religions, Ethics, Morals and Values education from an Anglican and Reformed Christian perspective and the extension of these to any students preparing to teach Religious Education in second-level schools under Protestant patronage;
- Provision of the CIC Religious Education Certificate for primary teachers and the extension of these to any students preparing to teach RE in second-level schools under Protestant patronage;
- Oversight of the archives and artefacts associated directly with the Centre and its history.

Its work will also involve

- Organising, overseeing, supporting and supervising the majority of

School Placements in primary schools under Church of Ireland, Methodist, Presbyterian and Society of Friends patronage for the Centre's B.Ed. students and provision of related tutorials and School Placement Studies and related specialist research modules;

- Maintaining and developing active links with the primary schools under Church of Ireland, Methodist, Presbyterian and Society of Friends patronage and with the broader Reformed Christian communities in the Republic of Ireland;
- Assurance of the curricular content of modules required to be taken by the Centre's B.Ed. students viz. - Inclusive Education, Early Childhood Education, Teaching and Working in Multi-Level Schools;
- Procurement of additional modules in Irish as required to assure an appropriate standard in Irish language literacy.

## 3. Staffing

Staff attached to the Centre will comprise:

- (i) The Director of the Church of Ireland Centre
- (ii) Coordinator of CIC School Placement

(iii) Lecturer in Religions, Ethics Morals and Values / Co-ordinator of the CIC Religious Education Certificate

(iv) Administrative support

Staff may be shared with other activities of the Institute (e.g. undergraduate and post-graduate teaching, research direction, research and community engagement).

#### **4. Other**

It is anticipated that the Centre will have a strong relationship with the University Anglican Chaplaincy. The Anglican Chaplaincy will provide pastoral care to B.Ed. students, the wider Institute of Education and across DCU.

The Centre will be responsible for oversight of the care and maintenance of the records, archives, artefacts and celebration of the culture of the Church of Ireland College of Education.

Other relevant academic staff may be linked to the Centre for quality assurance purposes so as to conduct relevant areas of teaching, learning and assessment, promotion of school links, research and public engagement work.

The Centre will be interested in developing specific strands at Masters and Doctoral level reflecting the interests and expertise of the staff within the Centre and the ethos, values, history and tradition associated with CICE. These will be developed and delivered in partnership with colleagues in the Institute and elsewhere in the University.





## Appendix 2

# Centre for Catholic Education (CCE)\*

### 1. Governance Framework

The Director: The Director of the CCE will be appointed by the President of the University in consultation with the Roman Catholic Archbishop of Dublin. The Director will fulfil a critical leadership role in the management of the Centre, in upholding its Catholic identity and service to the Catholic educational community as well as its contribution to the life of the university. The Director of the Centre will be a member of the Faculty of Education Management Committee, chaired by the Executive Dean.

\* Working title

The Advisory Board: The Director will be supported by an external Advisory Board whose membership will be nominated by the Roman Catholic Archbishop of Dublin. Its core role will focus on securing and promoting the Centre's Catholic ethos and outputs within a secular University. To this end it will:

- advise the Director with regard to the specific needs of the primary and post-primary schools which the Centre serves.
- advise the Director on curricular content and assessment of specialist areas within the Centre's remit.

- provide a representative who, along with the Director, will be part of the Appointment’s Board for members of core staff working directly in the CCE.

## 2. Specific Functions of the CCE

In engaging with Catholic education, the CCE will be responsive to the present and evolving needs of both primary and post-primary Catholic schools. It will build synergies with relevant stakeholder bodies within the Catholic community, be responsive to the Church’s educational philosophy and to the needs of primary schools conducted ‘in accordance with the doctrines, practices and traditions of the Roman Catholic Church’. Its approach will acknowledge the actual diversity present within the Catholic school sector and among the students of the Institute of Education participating in the educational activities offered by the Centre. It will make distinctive academic and professional contributions in a manner appropriate to a higher educational environment being located in, and contributing to, the wider work of the Institute and the University.

The CCE will:

1. maintain and develop active partnerships with the schools under Catholic patronage or trusteeship
2. contribute to taught and research programmes, where appropriate, throughout the University and also provide complementary and distinct offerings which address the needs of its constituency.
3. inspire and educate teachers, school chaplains, school leaders and managers to understand, develop and critique the Catholic educational ethos of their school communities and classrooms.
4. complement the more general provision provided relating to school placement within the Institute of Education’s programmes of initial teacher education to ensure that student teachers are prepared to undertake placements in Catholic schools.
5. complement the general Religious Education provision offered in the Institute of Education by providing those distinctive elements required to teach RE in Catholic schools .
6. provide the professional and academic education of those employed as Chaplains or Coordinators of Chaplaincy Services in schools.
7. promote and undertake research, source research funding, organize conferences and publish in areas related to Catholic education and the education of Catholic pupils.



8. work with others in Ireland and internationally to advance Research, Teaching and Learning in the field of Catholic education.

### **3. Staffing**

Staff attached to the Centre will comprise:

- A Director
- Academic specialists in Catholic Education, Catholic Religious Education, Catholic Theology and Chaplaincy Studies
- Administrative support.
- A small number of additional occasional staff will be required to provide specialist and supplementary expertise as the need arises.

### **4. Other**

The creation of a Chair of Catholic Education is regarded as desirable to establish a world-class centre.

It is anticipated that the Centre will have a strong relationship with the University's Catholic Chaplaincy.

